

ISOtube[®]

Gas Sampling Equipment



Box of 25 IsoTubes
with HAZMAT Shipper



IsoTube Septum Valve

For mudgas sampling:

- Extremely durable and reliable, resulting in reduced sample loss.
- Easier to use than gas bags.
- Less bulky to store than gas bags (shipped 25 per box).
- Can be configured in line with the normal mud-logging equipment.
- Can be legally shipped on both passenger and cargo aircraft according to IATA regulations.**
- HAZMAT packaging is included. UN certified shipping boxes meet all DOT and IATA requirements for shipment of flammable gases in IsoTubes.
- HAZMAT packaging was developed and tested specifically for use with the IsoTubes.
- Environmentally friendly IsoTubes are >99.9% recyclable; IsoTubes returned to Isotech result in a substantial reduction in waste compared to gas bags.

As a substitute for cylinders:

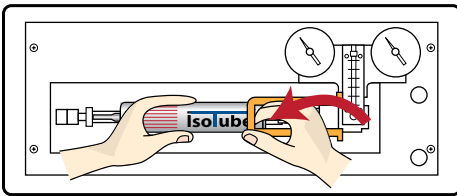
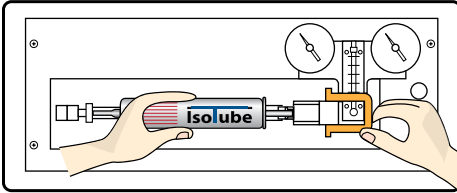
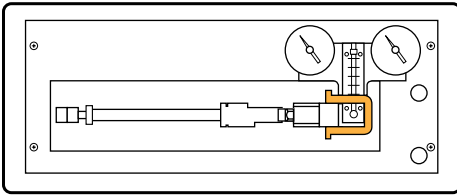
- IsoTubes are acceptable for pressurized sampling (limit: 80 psig; requires IsoTube Well-head Sampling Device).
- IsoTube shipping boxes are approved for air shipment, so rapid return of samples to the laboratory is facilitated.
- Smaller size and weight result in a reduction in shipping costs (volume ~110 ml).

****Hazardous materials can only be shipped by someone properly certified to do so; shipping instructions are included with each box of IsoTubes**

NOTE: IsoTubes[®] are NOT suitable for gases containing hydrogen sulfide (H₂S, sour gas)



IsoTube Gas Sampling Manifold



For mudgas logging

IsoTubes were originally designed for sampling during mudgas logging. The simple snap-in and flow-through features of the IsoTube Sampling Manifold allow samples to be taken instantaneously from a flow stream by simply flipping the valve control handle. This can all be done without interfering with the operation of other mud-logging equipment.

IsoTube® Wellhead Sampling Device



For pressurized samples IsoTubes can also be utilized as an alternative to expensive cylinders. Because the IsoTubes are shipped under the UN2037 classification, it is acceptable to ship them under pressure (maximum pressure: 80 psig). **By using our IsoTube Wellhead Sampling Device, it is possible to safely fill or transfer pressurized samples into IsoTubes.

NOTE: Shipment of any hazardous material requires that the shipper be properly trained to ship HAZMAT materials.



We have successfully shipped IsoTube gas sampling equipment to the following international locations

Algeria	Mauritania
Angola	Mexico
Argentina	Netherlands
Australia	New Zealand
Austria	Nigeria
Azerbaijan	Norway
Brazil	Oman
Brunei	Peru
Cameroon	Poland
Canada	Qatar
China	Saudi Arabia
Ecuador	Sierra Leone
Egypt	Singapore
Equatorial Guinea	South Africa
France	Spain
Germany	Taiwan
Ghana	Tanzania
Indonesia	Thailand
Iraq	Trinidad
Israel	Tunisia
Italy	Turkmenistan
Japan	United Arab Emirates
Jordan	Uganda
Kazakhstan	United Kingdom
Kenya	Venezuela
Malaysia	Vietnam

EFFICIENT AND MADE FROM >99.9% RECYCLABLE MATERIALS

IsoTubes consist of materials which are >99.9% recyclable. Furthermore, IsoTubes are packaged 25 to a box, compared to 2 or 3 per paint-can shipper, as is the case for gas bags. Not only does this translate into fewer shipping materials, but the smaller volume and weight also results in a significant reduction in shipping costs. The cost per sample (including container costs and shipping) is significantly cheaper when compared to gas bags. The cost of disposing of the bags and shipping materials must also be considered. This is not a concern for our IsoTubes...just return them to us and we will make sure they are properly recycled.

****Our IsoTubes are SINGLE-USE containers. (See IATA regs. pertaining to UN2037). Federal Law prohibits transportation if re-filled. Penalty up to \$500,000 fine and five years imprisonment 49 U.S.C. 5124.**